

P.O. Box 967, Pratt, KS 67124
620-672-5538
www.ninnescah.com



NINNESCAH RURAL ELECTRIC COOPERATIVE

Watts Ahead

NINNESCAH RURAL ELECTRIC CO-OP, INC.

BOARD OF TRUSTEES

Michael Christie
President

Glen M. Honeman
Vice President

Paul W. Unruh
Secretary

Edwin D. Lenkner
Treasurer

Lori R. Jones
Trustee

Ryan M. Lunt
Trustee

Marc T. Rundell
Trustee

Ruth Teichman
Trustee

Kenneth E. Unruh
Trustee

STAFF

Teresa Miller
General Manager

Robert Lamatsch
Manager of Operations

Sarah Ezell
Manager of HR/Accounting

IN CASE OF AN OUTAGE

If your electricity is off for more than a few minutes, please call 620-672-5538. The office hours are 8 a.m. to 4:30 p.m., Monday–Friday. After hours, calls will be answered by dispatch and forwarded to our on-call personnel.

Lineworkers Are Wired for Service

In the quiet hours before dawn breaks, while many of us are still nestled in our beds, lineworkers begin their day, often clad in flame-resistant clothing, safety goggles, rubber gloves and thick, heavy boots.

They are the individuals who epitomize dedication to service in its purest form. As we celebrate Lineworker Appreciation Day on April 14, this is an important moment to reflect on the essential role they play in our daily lives.

Amid towering utility poles and power lines, lineworkers exhibit a strength that goes far beyond the physical. Whether battling inclement weather, troubleshooting technical problems or navigating treacherous heights, lineworkers demonstrate resilience and a quiet determination to keep our lights on, our homes comfortable, and our communities connected.

Ninnescah Electric crews travel across our 10-county service territory, building, maintaining and repairing parts of our local system. Their extraordinary skills ensure our homes remain connected to the grid, businesses stay operational, and emergency services remain accessible — a lifeline that connects us all.

In moments of crisis, when the lights go out and we find ourselves in the dark, lineworkers emerge as beacons of hope. Their swift response restores normalcy, offering reassurance in times of uncertainty. Whether repairing storm-ravaged power lines or ensuring continuity during emergencies, their unwavering commitment illuminates life when we need it most.

Ninnescah Electric lineworkers also answer the call for mutual aid beyond the boundaries of home. Our crews travel to fellow co-ops, near or far, when widespread outages occur and additional support is needed. Cooperation Among Cooperatives is one of our seven guiding principles, and no one embodies this core commitment better than lineworkers.

This month, as we celebrate the remarkable men and women who ensure reliable power, let's recognize their unwavering dedication to the local communities they serve.

The next time you flip a switch, please take a moment to remember those who make it possible — lineworkers, who are wired for service and dedicated to illuminating life.



ENERGY EFFICIENCY TIP OF THE MONTH

Turn your suds into savings. Lower your energy use in the laundry room by washing clothes with cold water whenever possible, as heating water accounts for most of the energy used in a laundry cycle. Wash full loads to make the most of energy savings, and use high-efficiency detergent designed for cold washes. For drying cycles, clean the lint filter before each load to improve airflow and use dryer balls to reduce drying time. **SOURCE: NRECA**



TRUSTEE RETIREMENTS



Glen Honeman

GLEN HONEMAN was elected to serve on Ninnescah's Board of Directors in November 1987, he was elected as vice president and as a Kansas Electric Cooperatives, Inc. board member in 1991. Honeman served in these roles until his retirement in 2025.



Paul Unruh

PAUL UNRUH was elected in March 2004 and served as Ninnescah's secretary for over 20 years. Unruh also served as a board member for the Kansas Electric Power Cooperative (KEPCo) from 2015-2022.

Thank you, Glen and Paul, for your service and dedication to Ninnescah Electric!

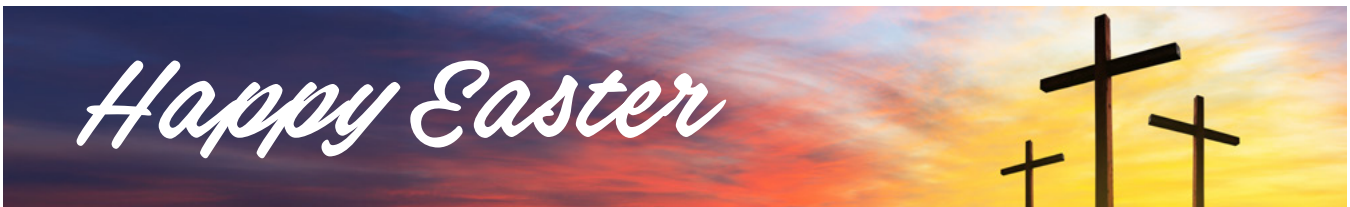
WELCOME NEW MEMBERS

- Tracy Alexander – Pratt
- Michael C. Ensley &/or Annette M. Carr – Epworth, GA
- Peter Penner – Iuka
- Kidron &/or Anna J. Riner – Macksville
- Joe Strohl – Pratt
- Amelia &/or Absallom Timothy – Pratt

Help Us Locate These Former Members

Below is a listing of members who have retired capital credits owed to them, but for whom we no longer have valid mailing addresses. If you recognize a name on this list, please alert the member (or member's heirs) so they can begin working with the cooperative to claim the capital credits. Please have them contact our office at 620-672-5538.

- | | | |
|-------------------------|------------------------|--------------------------|
| Avildsen, Ron | Friesen, Harold K | Parker, Joe W |
| Ary, Ron | Fleener, Wylan L | Paxson, Robin E |
| Austin, Robert Iii | Farmers Bank & Trust | Roses Lake Club |
| Arensdorf, Jerry | Freelove, Gregg A | Runkle, Douglas S |
| Abernethy, David C | Gould Oil Inc | Randels, Casey |
| Braden-Deem Inc | Givens, Jason | Ramsey, David E |
| Brant, Darrel | Gee, Steve | Richardson, Kathy J Wood |
| Brownlee, Mary Jo | Gates, Raymond | Schmidt, Robert D |
| Bruce, Clifford C | Geis, Dallas | Stratford, Randall C |
| Barker, Morton C | Hayes, Bryce F | Simon, Margaret |
| Brent, Richard | Hiatt, Owen | Squibb, Jeff A |
| Boor, Brandon S | Hageman, Randy | Steuber A O |
| Berens, David | Hammerschmidt, Aaron | Const Co Inc |
| Blackwell, Susan | Hoffmann, Kenneth | Stanley, David |
| Hinojof (Chinn), Bonnie | Johnson, David J | Schinstock, Tammy |
| Cline, Joanne | Johnson, Skeet T | Stevens, Kelly J |
| Clark, Merlin B | Johnson, Judy A | Hope, Lois |
| Chance, Raymond L | Kimball, Josephine B | Turner, Larry |
| Connelly, Edwin | Key Gas Corp | T T Production Inc |
| Condray, Jerry L | Leak, Evelyn | Turner, Don Dustin |
| Calhoun, James E | Long Lavinia B Agency | Tapia, Dora |
| Crissman, Kenton E | Labarge, Charlotte Ann | Uhl, Mike |
| Cromer, Eric | Lofing, Mark | Grace Cornerstone |
| Cross, Stan | Lumen Midstream | Fellowship |
| Curtis, Jacquelin A | Partnership | Wedel, Robert W |
| Cowen, Jarred | Meyer, Jerry | Wright, J R |
| Courtney, Sam L | Mueller, Stephen R | Wedel, James L |
| Chandler, Nancy J | Mcnic Oil & Gas Inc | Watkin, S Ronald D |
| Cairo Coop | Mccormick, Emma M | Warren, Terry |
| Dewitt, Brandon | Massoth, Ronda G | White, Kenneth S |
| Eidem, Michael C | Norrish, James P | Whitaker, W Shawn |
| Electrical Systems Inc | Nichols, Scott | Wilcox, Rick L |
| Eaton, Cheryl L | Onecomm Corp | Yates, Carrol L |
| Fisher, Merlin D | Pitts, Robert O | Zortman, Stan D |



STAY SAFE THIS SUMMER

Backyard Electrical Safety

As the weather warms and you spend more time outdoors, it's essential to prioritize electrical safety. Hidden hazards can pose serious risks.

Here are some critical safety tips to keep your loved ones safe in your backyard.

STAY AWAY FROM POWER LINES

Overhead power lines can be closer than they appear. Teach children never to climb trees near power lines and never to fly kites, drones, remote-controlled toys or balloons in areas where lines are present. If you see a downed power line, stay at least 50 feet away and report it to your local utility company immediately.

TRAMPOLINE SAFETY

If you're considering an above-ground trampoline, remember to look up for power lines. Children jumping high into the air could come dangerously close to overhead electric lines, which pose a serious risk of shock or electrocution.

Thinking about installing an in-ground trampoline instead? Before you dig, call 811 to have underground utility lines marked. Digging without knowing the location of buried electrical, gas or water lines can result in striking dangerous utility lines. This simple step can prevent accidents, service interruptions and costly repairs.

WATER SAFETY

Water and electricity are a dangerous combination. Keep these tips in mind to prevent electrical hazards and create a safe space for swimming, soaking and outdoor fun.

- ▶ Ensure pool lights, filters and outdoor outlets have ground fault circuit interrupter (GFCI) protection and inspect them regularly. GFCIs are designed to quickly shut off electrical power if they detect even a small change in electrical current.
- ▶ If you notice flickering lights or feel a tingling sensation in the water, exit immediately and contact a professional. Faulty wiring can cause electric shock drowning.
- ▶ Avoid using plug-in devices, like radios, speakers or chargers, near water. Opt for battery-operated, waterproof devices to reduce the risk of shock.
- ▶ Know what to do in case of an electrical emergency. If someone is shocked, do not enter the

water. Turn off the power source, call 911 and use a non-conductive tool, like a fiberglass pool pole, to assist.

- ▶ If it starts to rain, unplug electrical equipment, such as string lights, radios, speakers or power tools. Teach children not to touch electrical appliances with wet hands.

OUTDOOR SPORTS

Sports and play areas are a haven for children, but they can also contain hidden electrical hazards. Here's how to protect your loved ones:

- ▶ Ensure swings and other tall play structures are far from overhead power lines.
- ▶ If you have outdoor lighting for night games, ensure the fixtures are weatherproof and properly installed. Have a professional check for frayed wires or loose connections.
- ▶ If kids are playing with a ball and it goes inside a substation fence, teach them never to touch or climb the fence to attempt to retrieve it or any other item. Instead, call your electric utility to safely take care of it.
- ▶ Install a weather app on your phone to inform you of weather alerts. Lightning can occur up to 10 miles away from the heart of the storm, so if you hear thunder, seek shelter inside.

SUPERVISE CHILDREN AROUND ELECTRICAL EQUIPMENT

Children are naturally curious, which is why they should be kept away from outdoor electrical equipment like utility boxes, transformers and air conditioning units. If you have an outdoor generator, make sure it is stored in a secure, ventilated area that children cannot access and never plug a generator directly into your home's electrical system.

AVOID DIY ELECTRICAL WORK

If you're planning a backyard upgrade, such as installing landscape lighting, sports lighting or poolside outlets, leave the electrical work to licensed electricians. DIY electrical projects can pose serious safety risks to you and your family if done incorrectly.

FROM POOLSIDE PLAY TO BACKYARD SPORTS, IT'S IMPORTANT TO BE AWARE OF ELECTRICAL HAZARDS AND HOW TO AVOID THEM. By following these guidelines, you can create a home oasis that is both fun and safe.

TOP 10

Reasons We Appreciate Lineworkers

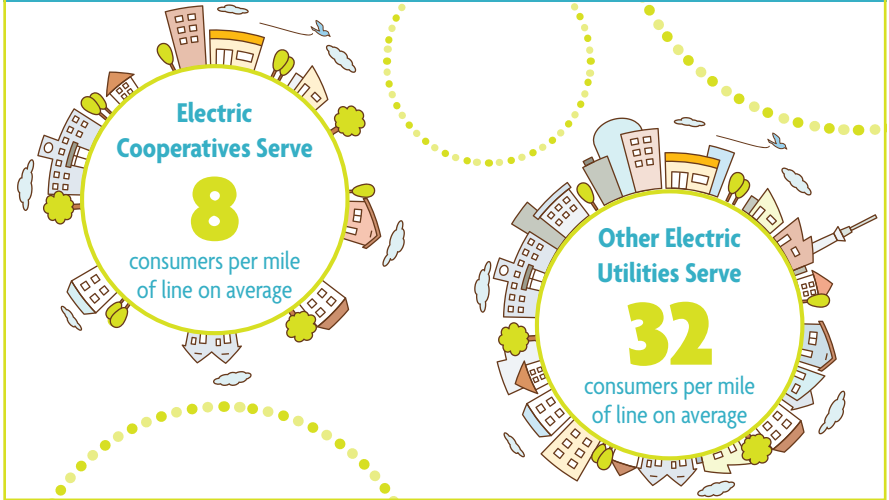
1. They are expertly trained to work on power lines and equipment.
2. They are dedicated to safely and efficiently maintaining power.
3. They have a heart for service, always looking out for their communities.
4. They conquer heights without hesitation.
5. They prioritize safety every second of every day.
6. They answer the call — day or night — to restore power.
7. They work in extreme weather conditions.
8. They go when and where they are needed, supporting communities nationwide when severe weather strikes.
9. They have each other's backs and work together like family.
10. They power our lives and energize our communities!



ELECTRIC CO-OP SERVICE DENSITY compared to OTHER ELECTRIC UTILITIES

Electric cooperatives maintain more power lines per consumer than other types of electric utilities.

Even though we serve fewer consumers per mile of line, we will always go the extra mile for our members.



SAFETY TIP

Before starting any digging project, call 811 or visit www.call811.com to have underground utilities marked. Hitting buried lines can cause serious injuries, service disruptions for you and your neighbors and costly repairs. Stay safe by knowing what's below before you dig.



SOURCE: WWW.SAFEELECTRICITY.ORG

TIPS TO AVOID UTILITY SCAMS

Don't fall for a power restoration rip-off. Some scammers will contact you and offer to restore power quickly or in a preferential order if you make an immediate payment. These scams typically occur after major storms or disasters that cause widespread outages. We will never request or require payment to restore power after a natural disaster or storm.

SOURCE: UTILITIES UNITED AGAINST SCAMS

