

P.O. Box 967, Pratt, KS 67124
620-672-5538
www.ninnescah.com



NINNESCAH RURAL ELECTRIC COOPERATIVE

Watts Ahead

NINNESCAH RURAL ELECTRIC CO-OP, INC.

BOARD OF TRUSTEES

Michael Christie
President

Kenneth Unruh
Vice President

Marc Rundell
Secretary

Edwin D. Lenkner
Treasurer

Lori R. Jones
Trustee

Clayton Kessler
Trustee

Ryan M. Lunt
Trustee

Jeff Schwertfeger
Trustee

Ruth Teichman
Trustee

STAFF

Teresa Miller
General Manager

Robert Lamatsch
Manager of Operations

Sarah Ezell
Manager of HR/Accounting

IN CASE OF AN OUTAGE

If your electricity is off for more than a few minutes, please call 620-672-5538. The office hours are 8 a.m. to 4:30 p.m., Monday-Friday. After hours, calls will be answered by dispatch and forwarded to our on-call personnel.

Pole Top Rescue

Ninnescah Electric's line crews recently completed their annual pole top rescue training. The exercise prepares linemen to safely and quickly secure and lower an injured coworker from the top of a pole to the ground. Linemen have four and a half minutes to put on their gear, climb the pole, properly secure a dummy and lower it to the ground.



Ninnescah Electric linemen recertify in pole top rescue training each year, ensuring they can rescue a fellow lineworker from the top of a pole in the case of an emergency.



Austin Barnard prepares to lower the practice dummy to safety.



Jeff Craft performs the pole top rescue.

6 ESSENTIAL TIPS

Keep Your Phone Charged During an Outage



Our phones have become lifelines to the world — use these quick tips to keep them powered up during an outage:

- ▶ **CHARGE AHEAD:** Fully charge your phone before predicted storms or outages.
- ▶ **USE YOUR CAR:** Keep a car charger handy, but only charge devices when the engine is running to avoid draining your car battery.
- ▶ **EMERGENCY GEAR:** Keep a charged portable power bank ready for emergencies. Look for emergency radios and portable speakers that double as charging jacks.
- ▶ **LAPTOP BACKUP:** Use your laptop's USB port to charge your phone (Note: This will drain the laptop battery.)
- ▶ **CONSERVE BATTERY:** Turn off Bluetooth, Wi-Fi, GPS, dim your screen, and use airplane mode or power down to save energy.
- ▶ **ALTERNATIVE CHARGERS:** Use solar-powered or hand-crank chargers for emergency calls.

Regularly check your emergency charging gear to ensure it's ready when you need it!

SOURCE: WWW.SAFEELECTRICITY.ORG

Ninnescah Parallel Generation Rider

At the regularly scheduled board meeting on **TUESDAY, SEPT. 23, 2025**, the Board of Trustees of Ninnescah Rural Electric, Inc. will discuss and vote upon a recommendation to adopt a rate tariff affecting Parallel Generation.

The proposed rate tariff shall pay the member, who desires to interconnect a distributed energy system owned by the member to the cooperative's delivery and metering system for the purpose of exporting excess electric power generated by the member's distributed energy system to the cooperative's system, a 100% of the cooperative's avoided cost of energy as a credit to the member's electric bill.

NOTICE TO MEMBERS

Board to Consider Rate Change

The Board of Trustees of Ninnescah Rural Electric Cooperative, Inc., will meet on **TUESDAY, SEPT.23, 2025, AT 7 P.M.** to discuss the proposed rate tariff. The meeting will be held at the cooperative office at 275 N.E. 20th Street in Pratt.

Action on the tariff may be taken at that time and become effective with the billings calculated on or after October 2025.

This meeting is open to any member who wishes to attend. Members unable to attend may call the office at 620-672-5538 or send written comments to Ninnescah Rural Electric Cooperative, PO Box 967, Pratt, KS 67124. Members have the right to request review by the Kansas Corporation Commission of any rate change approved by the cooperative as provided by K.S.A. 66-104d(g).

WELCOME NEW MEMBERS

Big D Land & Cattle Co. LLC – *Mandeville, LA*

Jeffery J. Jones – *Kinsley*

Richard Hageman Jr. – *Goddard*

Ruth L. Starkey Rev. Trust – *Hutchinson*



SCHEDULE HVAC MAINTENANCE

Now is the perfect time to schedule maintenance for your heating system. HVAC techs are less busy in the fall, making this an excellent time for any necessary updates or repairs. A qualified tech can clean filters, check for leaks and make sure your system is in tip-top shape to keep you cozy this winter.

Keep Food Safe Before, During and After a Storm

Storm season can bring power outages, putting your food at risk of spoiling. You can keep your groceries safe and reduce waste with a little preparation.

BEFORE THE STORM

TAKE A FEW PRECAUTIONS:

- ▶ Use appliance thermometers in your fridge and freezer. Safe temps: 40 F (fridge), 0 F (freezer).
- ▶ Freeze water containers to help maintain cold temperatures.
- ▶ Keep coolers, ice packs or ice ready in case of long outages.
- ▶ Consider filling plastic containers with water, leaving an inch of space inside each one, to help keep food cold if the power goes out.

STOCK UP ON READY-TO-EAT FOODS THAT DON'T NEED REFRIGERATION INCLUDING:

- ▶ Bottled water
- ▶ Canned goods such as veggies, fruits, beans and tuna. Don't forget a manual can opener
- ▶ Instant mashed potatoes or oatmeal for carbs and energy
- ▶ Crackers and nuts
- ▶ Dry cereal and powdered milk

DURING AN OUTAGE

In the event of a disaster, it is important to follow a specific sequence for using your available food supply. Start with perishable foods and items from the refrigerator. Following that, turn your attention to the freezer, then begin using nonperishable foods and essential staples.

Losing a fridge full of food is costly, inconvenient and can

be dangerous if you're running low on rations. While you may not be able to save everything, here are ways to preserve food as long as possible:

- ▶ **KEEP DOORS CLOSED.** A fridge keeps food safe for up to 4 hours; a full freezer, up to 48 hours.
- ▶ **USE A COOLER IF THE POWER IS OUT FOR MORE THAN 4 HOURS.** Layer frozen items with fridge foods and ice for a more consistent temperature.
- ▶ **IF YOU DON'T HAVE A COOLER, YOU CAN USE YOUR FREEZER.** Put ice in bowls and place them around the food to prevent melting ice from flooding your freezer. Use blankets to insulate the freezer, but ensure that air vents are unobstructed.
- ▶ **MONITOR TEMPERATURES WITH A THERMOMETER.** Food must stay below 40 F to stay safe.
- ▶ **NEVER TASTE FOOD TO TEST SAFETY.** If it smells, looks or feels off — throw it out.
- ▶ **DON'T USE FOOD THAT TOUCHED FLOODWATER UNLESS IT IS IN WATERPROOF PACKAGING.**

AFTER THE POWER RETURNS

- ▶ Frozen food is safe if it still contains ice crystals or has stayed under 40 F.
- ▶ Don't refreeze or cook food that got too warm.
- ▶ Throw out anything questionable.

Use the U.S. Department of Agriculture's guide to learn more about foods you can keep or should throw out after a power outage: www.foodsafety.gov/food-safety-charts/food-safety-during-power-outage.

Staying prepared can help you avoid illness, waste and added stress during a storm.

YOUR SAFETY MATTERS

BE PREPARED THIS HARVEST SEASON!

Your electric cooperative reminds all farmers and farm workers to have a safe harvest season.



LOOK UP AND LIVE

Always be aware of overhead power lines when operating tall equipment like grain augers and combines.



KNOW WHAT TO DO IN AN EMERGENCY

If your equipment contacts a power line, stay inside the cab and call 911. Only exit if there is immediate danger like a fire. If you must exit, jump clear without touching any part of the equipment, and hop away keeping feet together.



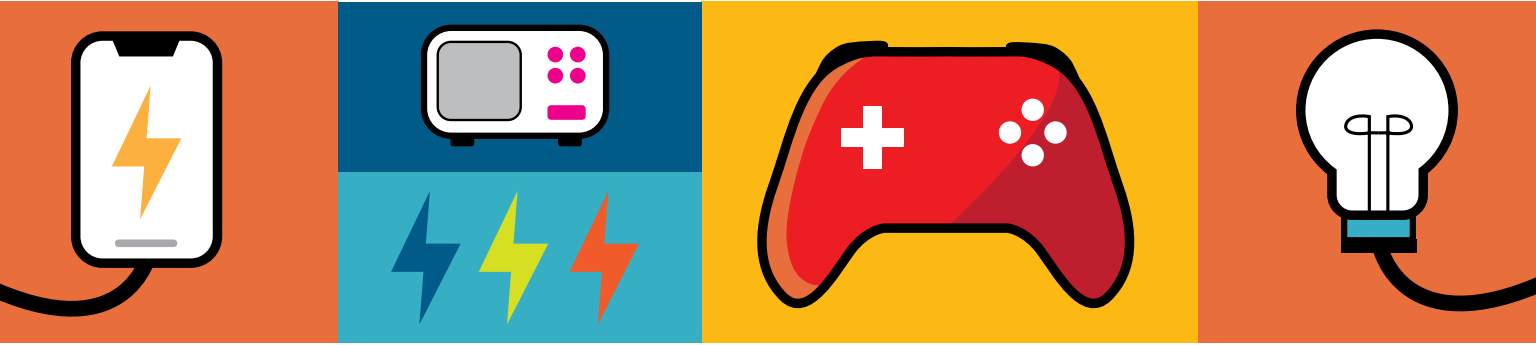
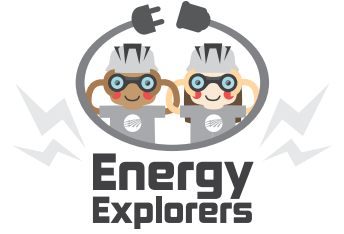
KEEP A SAFE DISTANCE

As you work, be aware of overhead power lines. Always maintain at least 20 feet of clearance from power lines and electrical equipment.


The Value of Electricity


Did you know the average daily cost of electricity is about \$5? When you think about all the ways we use electricity every day, that's a great value!


A DAY'S WORTH OF ELECTRICITY POWERS: HOME HEATING/COOLING, ELECTRONICS, LIGHTING, MAJOR APPLIANCES AND MORE.




Look at the everyday items below, then add a plus (+) sign next to the items you think cost more than daily electricity. For items you think cost less than daily electricity, add a minus (-) sign.


1. 
Large Pizza

2. 
1 Movie Ticket

3. 
Candy Bar

4. 
Video Game

5. 
Ice Cream Cone

6. 
Plush Toy

ANSWER KEY 1. + 2. + 3. - 4. + 5. - 6. +